

# Glory to the World-Ash

Music & Russian verse by Valentin Dubovskoy

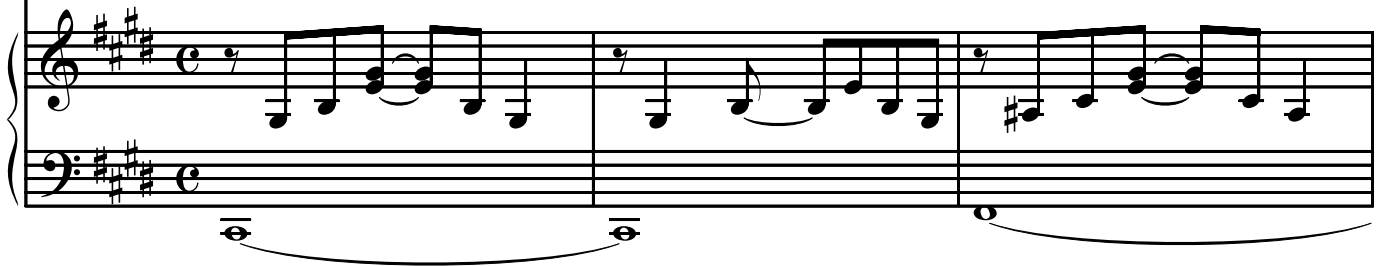
F#9 Lyrics by Aleister Crowley

♩ = 145 C#m7



For of the Fa-ther and the Son —  
И - бо у Сы-на и От - ца, —

The Ho - ly Spi - rit is  
про - об - раз свет-лый - Свя -

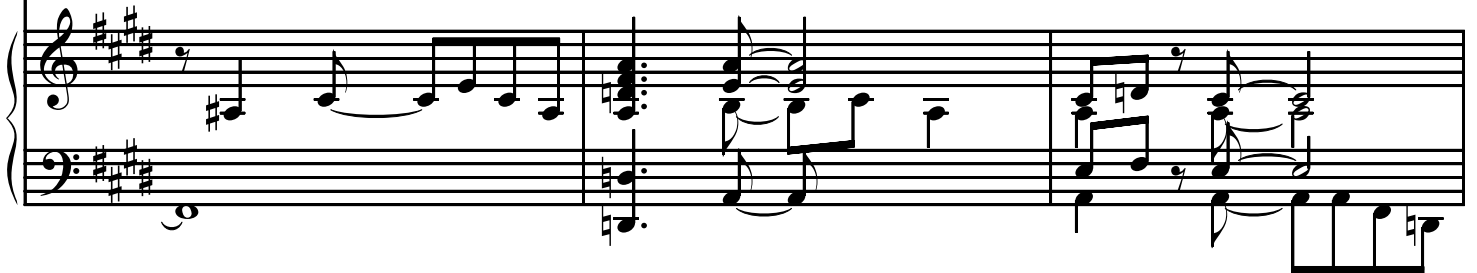


D A A D/A A

4



the norm; — Male - fe - male, quint - es - sen-tial, one, —  
- тый Дух; — чёт - не - чет в нём сли - ва - ют - ся - - -



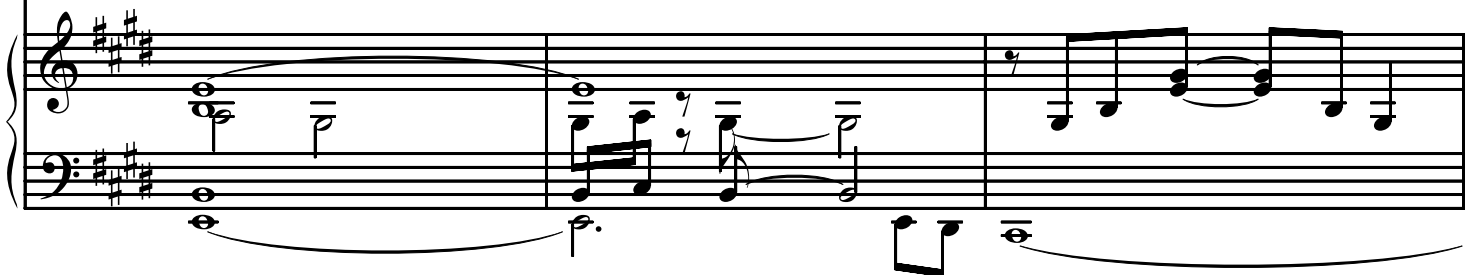
E E A/E E C#m7

7



Man - be - ing veiled in Wo - man - form. —  
муж - де - ва, е - ди - ни - ца в двух. —

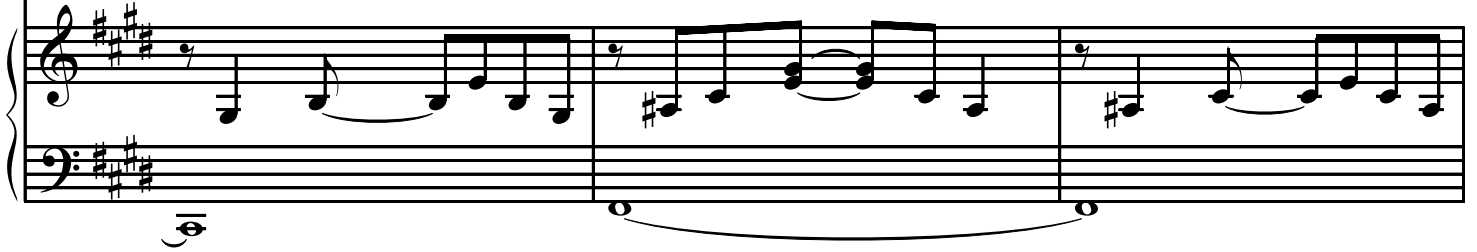
Glo - ry and wor - ship in  
Сла - ва в выш-них и





the highest, \_\_\_  
по - чёт, \_\_\_\_\_

Thou Dove, man-kind that dei - fiest, \_\_\_  
Го - лубь - че - ло - ве - ков бог! \_\_\_\_\_



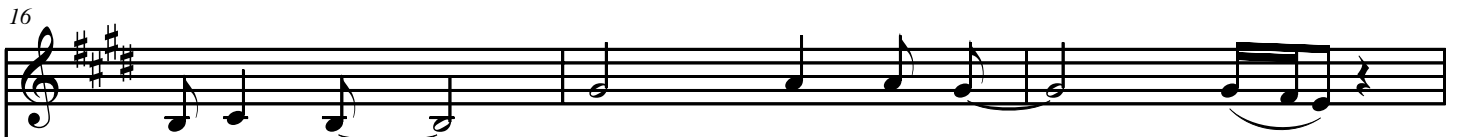
D A A D/A A E



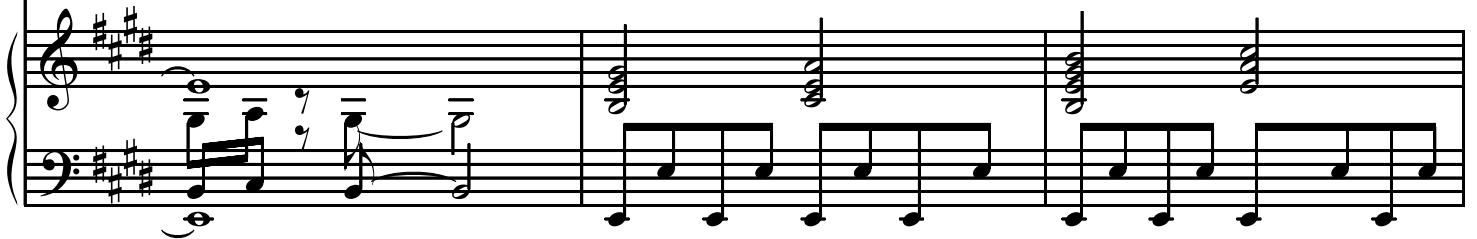
Be - ing that race, \_\_\_ most ro - yal - ly run \_\_\_ To spring sun-shine through  
Сквозь бу - ри к солн-цу вес - ны сте - зи им у -



E A/E E E A/E E A/E



win - ter storm. \_\_\_ Glo - ry and wor - - - ship \_\_\_  
- ка - за - - ны! - - - О - - - сан - на - в выш - - - них - - -



19 E Dm E E A/E E A/E

be to Thee, Sap of the world - ash,  
 - и - по - чёт, - - - я - - - се - ня - дре - - - ва - -

23 E Dm E E A

won - der - tree! Glo - ry to Thee  
 - чу - - дес - - ный еок! - - - - - Сла - ва - Те - бе, -

26 E E Dm E E A

- - - from Gil - ded Tomb! Glo - ry to Thee  
 - - - Гроб - Зо - лю - той! - - - - - Сла - - вим те - бя  
 from Wai - ting Womb! Glo - ry to Thee,  
 Че - ва - По - кой! Сла - вим не - вест, -

E E Dm E

from earth un - ploughed! \_\_\_\_\_  
 -дух - пе - ли - ны! \_\_\_\_\_  
 from vir gin vowed! \_\_\_\_\_  
 что об - ру че - ны! \_\_\_\_\_

E A E E A E

Glo - ry to Thee, \_\_\_\_\_ true U - ni - ty \_\_\_\_\_  
 - Сла -- ва - Те - бѣ, \_\_\_\_\_ - ис -- тин - ный ствол \_\_\_\_\_  
 Glo - ry to Thee, \_\_\_\_\_ thou sire and dam \_\_\_\_\_  
 Сла - ва от - цу, \_\_\_\_\_ ма - те - ри пѣснь! \_\_\_\_\_

E A E E Dm E

Of the E - ter - nal Tri - ni - ty! \_\_\_\_\_  
 - Тро -- и - цы веч - ной - Е - дин - ство! \_\_\_\_\_  
 And self of I \_\_\_\_\_ am that I \_\_\_\_\_ am! \_\_\_\_\_  
 Сло - во тво - ё: \_\_\_\_\_ Су - щий Я есмь! \_\_\_\_\_

Glo - ry! Glo-ry! Glo - ry!  
Сла - ва! Сла-ва! Сла - ва!

E A E E A

Musical notation for the first system, including vocal line and piano accompaniment. The vocal line starts with a treble clef and a key signature of three sharps (F#, C#, G#). The piano accompaniment is in a grand staff with treble and bass clefs. The system begins with a double bar line and repeat sign.

Glo - ry to Thee, be - yond all term,  
- Сла - - ва Те - бе, - - - - - се - - - ме - - ни прыть!  
e - ter - nal Sun,  
e - ди - ный в Трёх,

Piano accompaniment for the first system, including treble and bass clefs. The piano part features a steady bass line and chords in the right hand.

Hal - le - lu - ya!  
Ал - ле - лу - я!

E E A E

Musical notation for the second system, including vocal line and piano accompaniment. The vocal line continues with a treble clef and the same key signature. The piano accompaniment continues in the grand staff.

Thy spring of sperm, thy  
Веч -- но - нам се - - - - - ять -  
Thou One in Three, Thou  
Трой ной в Е - ди - ном,

Piano accompaniment for the second system, including treble and bass clefs. The piano part continues with the same accompaniment style as the first system.

In the high - est!  
Сла - ва в выш - них!

47

E Dm E E A

seed and germ! Glo - ry and wor -  
- и - рае -- тия! - - О - - сан - на в - выш -  
Three in One!  
Сол - неч - ный Бог!

*molto rit.*

50

E E Dm E E G#7

- - ship \_\_\_ be - to \_\_\_ Thee, \_\_\_ Sap of the world -  
- -- них \_\_\_ - и- - по -- чет, \_\_\_ - - - я - се - ня -- дре -

54

C#m7 F#7 D7 A/B E **A tempo** A

tree! \_\_\_  
сок! \_\_\_

- - - ash, \_\_\_ won - der - - - Glo - - ry to Thee \_\_\_  
- - - ва \_\_\_ чу - дес - - - ный - - - Сла - ва Те - бе! \_\_\_

57

E E A E

Glo - ry to Thee  
Сла - ва Те - бе!

60

E A E

Glo - ry to Thee  
Сла - ва Те - бе!